

YEAR 2012

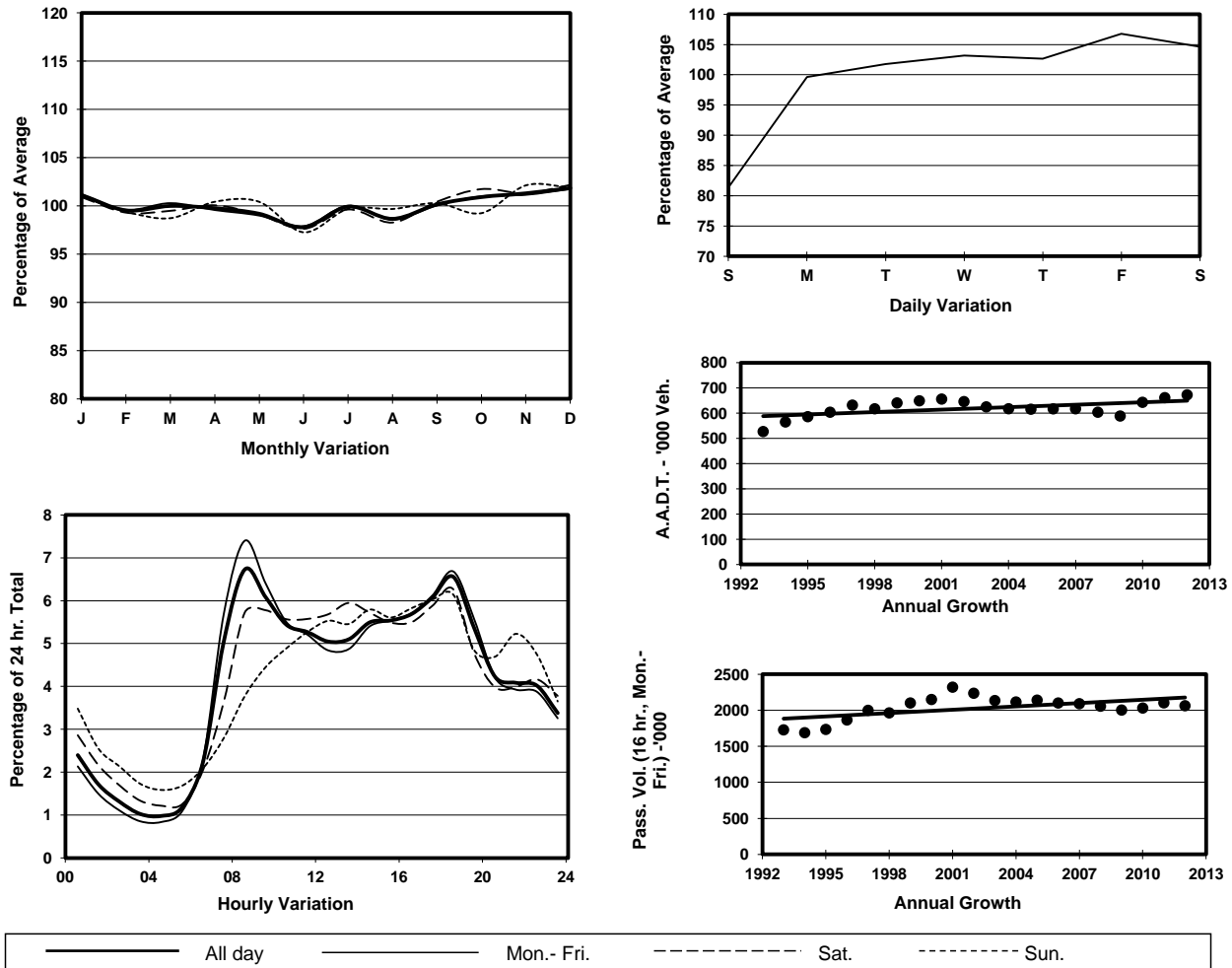
Location

Kowloon External Cordon(Kolwoon Urban Area Boundary)

Stations on Cordon/Screenline

4201, 5017, 5021, 5022, 5023, 5024, 5026, 5030, 5037, 5038, 6203, 6204 and 6214

1. TRAFFIC FLOW VARIATION AND GROWTH



2. TRAFFIC CHARACTERISTICS (BY DIRECTION)

Parameter	All - Day	Mon. - Fri.	Sat.	Sun.
SOUTH BOUND				
A.A.D.T.	338540	352170	357530	274970
R 12 / 24 - %	71.4	72.8	69.7	64.9
R 16 / 24 - %	86.6	87.7	84.8	82.4
AM Peak Hour	0800-0900	0800-0900	0800-0900	0900-1000
One-way flow at AM peak hour	26380	30200	23800	13670
T - % (AM)	-	16.3	-	-
PM Peak Hour	1800-1900	1800-1900	1800-1900	1800-1900
One-way flow at PM peak hour	21290	22110	21920	18000
T - % (PM)	-	13.5	-	-
Prop.of commercial vehicles - 16 hr.	-	17.3	-	-
NORTH BOUND				
A.A.D.T.	333840	345790	352780	278370
R 12 / 24 - %	64.7	65.9	63.7	58.3
R 16 / 24 - %	84.9	86.2	82.5	79.8
AM Peak Hour	0800-0900	0800-0900	0900-1000	0900-1000
One-way flow at AM peak hour	18850	21440	17240	10950
T - % (AM)	-	17.4	-	-
PM Peak Hour	1800-1900	1800-1900	1800-1900	1600-1700
One-way flow at PM peak hour	22790	24520	22550	16360
T - % (PM)	-	13.1	-	-
Prop.of commercial vehicles - 16 hr.	-	17.2	-	-

3. OTHER INFORMATION AND COMMENT

Kowloon External Cordon
Year 2012

4. Vehicle classification and occupancy - Monday to Friday

Time		Class of vehicle									
		Motor Cycle	Private Car	Taxi	Private LB	PLB	Goods veh.		Non Fr. Bus	Fr. Bus	
							Light	M & H		SD	DD
0700-0800	Pro	4.4	35.4	18.9	1.5	2.9	17.7	9.8	5.3	0.1	4.0
	Ocp	1.1	1.5	2.1	7.6	12.4	1.5	1.2	17.3	13.5	55.1
0800-0900 Peak Hour	Pro	3.3	45.1	15.4	0.6	2.3	16.7	9.9	3.5	0.1	3.1
	Ocp	1.1	1.4	1.9	5.2	12.5	1.5	1.3	23.9	15.6	61.1
0900-1000	Pro	2.2	38.7	16.1	0.8	2.0	22.1	12.7	2.0	0.1	3.3
	Ocp	1.1	1.3	1.9	2.6	10.3	1.5	1.2	12.4	8.0	31.7
1000-1100	Pro	2.2	33.5	15.1	0.7	1.8	25.8	16.0	1.6	0.1	3.1
	Ocp	1.0	1.4	1.9	2.2	9.6	1.4	1.3	10.5	7.6	26.1
1100-1200	Pro	2.1	32.9	13.7	0.9	2.4	27.6	15.6	1.7	0.1	3.1
	Ocp	1.0	1.4	2.0	2.7	8.6	1.4	1.2	13.3	5.4	26.4
1200-1300	Pro	1.9	36.1	13.9	1.1	2.3	24.5	13.9	2.9	0.1	3.3
	Ocp	1.0	1.4	2.0	4.7	8.6	1.4	1.3	13.5	9.8	25.3
1300-1400	Pro	2.3	32.3	14.0	1.1	2.3	26.5	15.5	2.6	0.1	3.4
	Ocp	1.1	1.4	2.1	4.0	10.4	1.5	1.3	12.6	9.5	28.4
1400-1500	Pro	2.0	34.9	12.8	0.8	1.9	27.5	15.0	1.9	0.1	3.1
	Ocp	1.1	1.5	2.0	2.3	8.6	1.5	1.3	10.8	8.8	26.8
1500-1600	Pro	2.2	35.3	12.7	1.3	2.1	26.6	14.5	2.2	0.1	3.1
	Ocp	1.1	1.5	2.1	4.9	9.5	1.5	1.2	15.1	6.1	26.8
1600-1700	Pro	2.5	35.6	15.2	1.4	2.0	24.2	12.3	3.3	0.1	3.4
	Ocp	1.1	1.5	1.9	4.1	11.4	1.5	1.2	10.7	7.8	32.2
1700-1800	Pro	3.8	38.7	14.6	1.1	2.2	21.7	11.0	3.2	0.1	3.6
	Ocp	1.1	1.5	1.9	3.4	12.6	1.6	1.2	11.8	10.8	43.6
1800-1900	Pro	4.5	51.6	12.7	0.4	2.8	14.9	7.3	2.6	0.1	3.2
	Ocp	1.1	1.4	2.2	2.9	14.4	1.4	1.2	20.8	20.8	61.7
1900-2000	Pro	2.9	57.1	14.6	0.2	3.0	10.3	5.6	2.8	0.1	3.4
	Ocp	1.1	1.5	2.0	2.7	11.8	1.4	1.1	21.8	12.8	47.7
2000-2100	Pro	3.2	51.7	20.3	0.2	3.7	9.5	5.5	2.0	0.1	3.9
	Ocp	1.1	1.5	2.0	1.8	11.2	1.4	1.1	13.8	7.1	35.2
2100-2200	Pro	3.1	48.4	24.7	0.2	3.8	8.2	4.9	2.4	0.1	4.3
	Ocp	1.2	1.5	2.0	3.1	10.1	1.4	1.1	9.5	7.1	31.3
2200-2300	Pro	3.1	48.3	28.9	0.2	4.1	5.5	3.9	1.4	0.1	4.5
	Ocp	1.1	1.5	2.0	1.7	9.5	1.3	1.1	12.3	6.3	30.6
16 hours	Pro	2.9	40.9	16.0	0.8	2.5	19.7	11.0	2.7	0.1	3.4
	Ocp	1.1	1.4	2.0	4.1	10.9	1.5	1.2	15.5	9.5	38.2

Legend

- Pro.** Proportion of vehicles in % (Sum may not add up to 100% due to figure rounding)
- Ocp.** Average occupancy of vehicles
- M & H** Medium and Heavy